

CLARA's services and projects

CLARA's Services- RedCLARA's Portal



sivic
Servicio Integrado de Videoconferencia



REDCLARA VE
VIDEOS A PEDIDO

Looking
for
partners



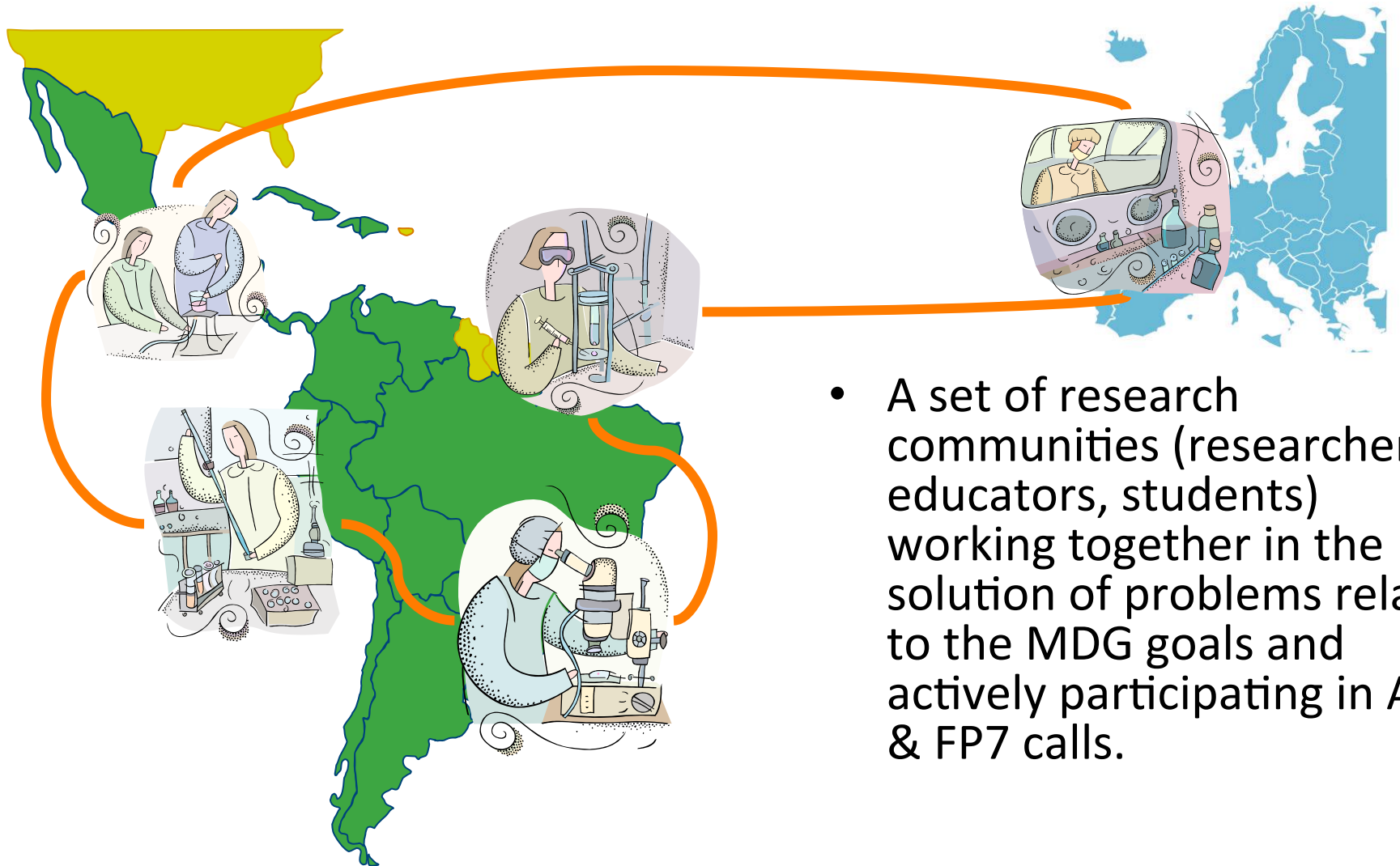
Funding
Database



DSPACE



User Communities and Research Projects



- A set of research communities (researchers, educators, students) working together in the solution of problems related to the MDG goals and actively participating in ALFA & FP7 calls.

RedCLARA Communities



1. LACXSER (LATinoamerican Colaboratory of eXperimental Software Engineering Research)



2. ReLANS (Red Latinoamericana de Nanotecnología y Sociedad)

3. MAYA (Red de Microorganismos, Agricultura y Alimentos)



4. MCISur (Manejo Costero Integrado del Cono Sur)



5. LAGO (Large Aperture Gamma Ray Burst Observatory)

6. MAPA D2 (Mapa e Programa de artes em dança digital)



7. LACLO (Latin American Community of Learning Objects)

8. CoLaBoRa (Comunidad Latinoamericana de Bibliotecas y Repositorios Digitales)



9. URDIMBRE (Research of the impact of TIC in education)



ComCLARA2010



ComCLARA2011

1. LAGO (Large Aperture Gamma Ray Burst Observatory)

2. MAPA D2 (Mapa e Programa de artes em dança digital)

3. LACLO (Latin American Community of Learning Objects)

4. CoLaBoRa (Comunidad Latinoamericana de Bibliotecas y Repositorios Digitales)

5. FLU-CAP Programa de Influenza para Centroamérica y Panamá

6. TIC en FID Formación Docente Inicial

7. ACHALAI Red internacional de recuperación del patrimonio inmaterial de tradiciones musicales

8. Grid Computación Científica y de Alto Rendimiento

9. ARCU-RED Comunidad de arte y cultura en la red

10. IPOL-LA Image Processing Online Latin America

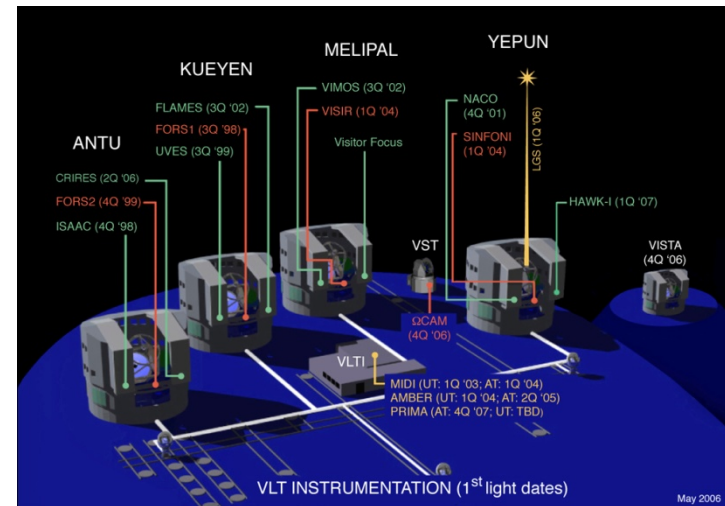
11. CLARISE Comunidad Latinoamericana Abierta Regional de Investigación Social y Educativa

12. Latin IDE Comunidad Latinoamericana de Infraestructura de Datos Espaciales

13. CLIC Comunidad Latinoamericana de Investigación y Construcción de Conocimiento

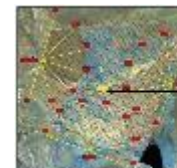
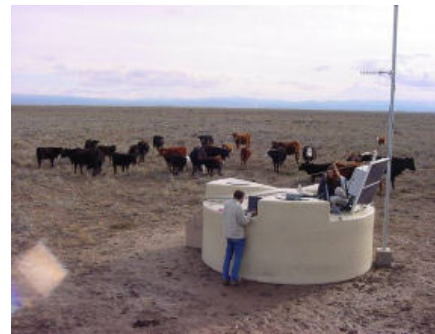
ESO Paranal Optical Observatory

- Very Large Telescope located near Antofagasta in Chile
- VLT Interferometer



Pierre Auger Observatory: Cosmic Rays in the Argentinean Andes

- To study the universe's highest energy particles
- Located 400 Km South of Mendoza in Argentina
- US\$ 50 Million Budget
- Data must leave the “Pampa” and go to Europe, Japan, US
- AugerAccess to link the observatory to RedCLARA



Pierre Auger Observatory



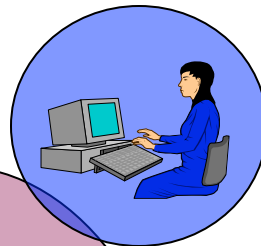
Global Cosmic Ray

500 km

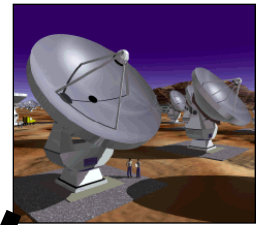


ALMA: Atacama Large Milimeter Array

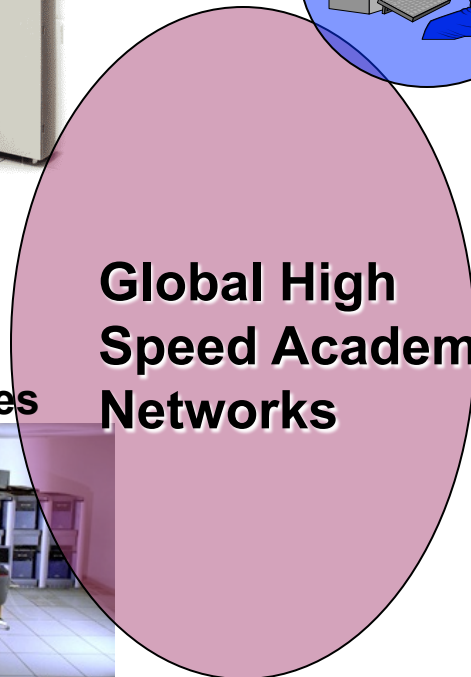
Vancouver & Other Data



Chajnantor 5000mts



Europe, Japan, US
Computing Facilities



G-REUNA



San Pedro de Atacama
Storage & Processing



Development of a Federated Network of Institutional Repositories for Scientific Documentation in Latin America.

- **Objectives:**
 - Making available the produced information for researchers
 - Giving visibility to Latin American scientific production,
- **Partners:** Argentina, Brasil, Chile, Colombia, Ecuador, México, Perú, Venezuela.
- **Executing Agency:** CLARA - Cooperación Latinoamericana de Redes Avanzadas.
- **Financing Sources:** \$US 986.465 (IDB: US\$632.180)
- **Execution time:** 4 años
- **Type of Project:** RPG, Regional Public Good.

Grid initiative

GISELA

- E- Infrastructure shared between Europe and Latin America
- Grid Computing - among LA and Europe institutions.
- Human network working on grids, e-science and e-infrastructure

Questions?

THANK YOU !

Martha I. Giraldo

migiraldo@gmail.com